



# JASPER PLACE

## Family Resource Centre

### Annual Report 2019-2020

Serving children, families and the community since 1972.

#### Centre's Vision

We are a leader in early learning and care.

We create stronger, healthier families and communities.

#### Centre's Mission

To partner with parents in promoting children's healthy growth and development by providing high quality early learning and care, and coordinated family programs and services.



#### Core Values

Relationship  
Community  
Inclusion  
Learning

#### Dear Families, Board Members, Staff and Partners,

As I sit down to write this annual report and to reflect on the Centre's accomplishments over the past year, I find that I cannot do so without acknowledging the COVID-19 Pandemic we are currently living in. The Pandemic has brought many ongoing challenges to the Centre, our participants and our community. It has also created some hidden opportunities and continues to do so.

#### Challenges

The initial closure of both Childcare programs in March hit both families and staff hard. We were uncertain how long the closures would last and were concerned for everyone's health. The public health orders put in place to prevent the spread of the virus meant that we were unable to offer in person drop-in play groups or parent education and family support groups. We were uncertain how we could continue to support children and families. Everyday seemed to bring something new, living in the unknown.

#### Opportunities

These challenges provided opportunity to live our mission and core values. We were thankful to have these touchstones as sources of strength and direction.

The childcare Centre at Cabrini was proud to open for essential workers and provided care for 24 families through April and May. As part of the Provinces phase 1 re-opening in June, we were able to open spaces for our returning families. We worked together to develop and refine health and safety protocols aligned with Alberta Health and Children's Services guidance.

## Opportunities continued ...

During both Early Learning and Child Care Program closures and partial closures, Educators stayed connected to children and families, providing learning opportunities via Google Classroom and Storypark platforms.

Both the early learning and family support teams had opportunity to complete Professional Development training including: Core Brain Story Certification, Raised Between Cultures, Indigenous History, Respect in Childcare and Mental Health First-Aid.

The Centre was able to respond to the needs of the community during this time by increasing our food security supports. Families in need were able to pick up food boxes in the parking lot or to have them delivered to their homes. The Centre provided 255 food boxes during the months of May to August.

Our family support team worked hard to bring our parent education, family support and early childhood development programs onto virtual platforms as well as to safely offer front yard or curbside individualized support to families.

These past 8 months have provided many opportunities for our staff to share their strength, flexibility and openness to challenge.

## Our Early Learning and Child Care Programs

### A dedication to quality

The Centre continues to strive to offer the highest quality programs by focusing on the evidence base of current best practice in the field. This includes:

**Qualified Early Childhood Educators** - 86% of our Educators have a minimum of 2 years education in Early Learning and Care and hold the highest level of Provincial Child Care Certification.

**Ongoing Professional Development** - Both programs set yearly learning focuses. Each Educator sets an individual learning goal with defined steps and outcomes.

**Vibrant outdoor play spaces** - Outdoor play is an important component of our ELCC programs. Both sites strive to create outdoor spaces that invite large motor movement, exploration of nature, and play that involves taking risks.

**Family centered practice** - Parents are the experts in their child's lives. Connecting home and family experiences to child care starts at the beginning of a families journey with us with the co-writing of a family narrative, and carries on throughout the years with invitations to set developmental goals together, to provide input into our emergent curriculum planning and opportunities to gather together to learn and celebrate with one another (hopefully in person as the restrictions of the pandemic lifts).



## **A dedication to quality continued ...**

**Early Learning and Childcare Framework** - Our ELCC Programs implement FLIGHT: Alberta's Early Learning and Care Framework. This framework embraces children's everyday experiences as sources of curriculum. FLIGHT serves as a guide for Educators in their work with children and in articulating children's learning and development . Our ELCC programs are recognized as lighthouse centre's of demonstration of FLIGHT implementation. <https://flightframework.ca/>

**Continuous program evaluation** - with the end of the Provinces Child Care Accreditation Program, the Centre continues to develop internal program evaluation processes which include outcome measures for children, families and the community.

## **Cabrini Early Learning and Childcare Program**

### **The end of our participation in the Provinces 3 year ELCC Pilot Project (\$25 a day)**

The Centre is thankful to have been designated one of the Provinces 122 Early Learning and Child Care Centres, 1 of 35 in the city of Edmonton. Although April 2021 will bring the end of this pilot and the return of regular monthly fees, there have been a number of positive, lasting achievements as a result of our participation.

### **Achievements**

**Accessibility** - We were able to increase the number of child care spaces at Cabrini from 56 to 76, opening a fifth playroom.

**Quality** - The Centre had support to successfully implement the FLIGHT Framework, this included: ongoing mentorship from a Pedagogical Partner, access to educator training and connection to regional learning communities.





### **Achievements continued ...**

Inclusion– Our educators received training and ongoing coaching supports in **Access Supports and Participation (ASaP)**. This work that ensures the inclusion of all children in our program through the implementation of critical social and emotional strategies. <https://www.gritprogram.ca/ASaP/>

Family Support– The ELCC pilot project allowed for the creation of a Family support Liaison position. This position created opportunities to build our family connection strategies and to reach out to our community and share information about quality child care .



### **Orange Hub Early Learning and Childcare Program** **Our growing family**

We were so excited to expand our services with the opening of our Orange Hub Early Learning and Child Care Program in the City of Edmonton's Orange Hub, September 2019.

#### **New families**

Although slowed by the Pandemic, our registration continues to grow as new families join us and work together to co-create our program.

#### **Building teams**

We have built strong early learning teams with well trained early childhood educators invested in the field of early learning and child care.

#### **Partnerships with co-tenants**

Owned by the City of Edmonton, the Orange Hub is a centre for non-profit groups. With more than 20 tenants, it is a Centre that offers programs and services in the arts, recreation, wellness and learning. We are finding partnership opportunities with our co-tenants in building a community of vitality.



The Centre served  
**1473** participants  
via **148** programs  
at **12** locations

More than **300** people  
accessed food and clothing  
from the Centre

### Supporting children and families in our community

Jasper Place Family Resource Centre is the Family Resource Network Hub for West Edmonton

2020 brought change to the Centres Family Support Services. Provincial Parent Link Centre's came to an end after successfully serving families province wide for 17 years. This meant the end of our designation as the Parent Link Centre for west Edmonton. As the Province worked to re-structure prevention and early intervention services, this also meant the end our TALKS Program that supported teen parents for the past 25 years.

This re-structuring came in the form of Family Resource Networks and the need to apply for new Government funding in order to continue the Centre's mission of offering coordinated family programs and services.

The Centre is proud to report that we were also successful in our Provincial FRN application and are now the **designated Family Resource Network Hub for West Edmonton** as well as continuing to provide Parent Education and Early Childhood Development Services.

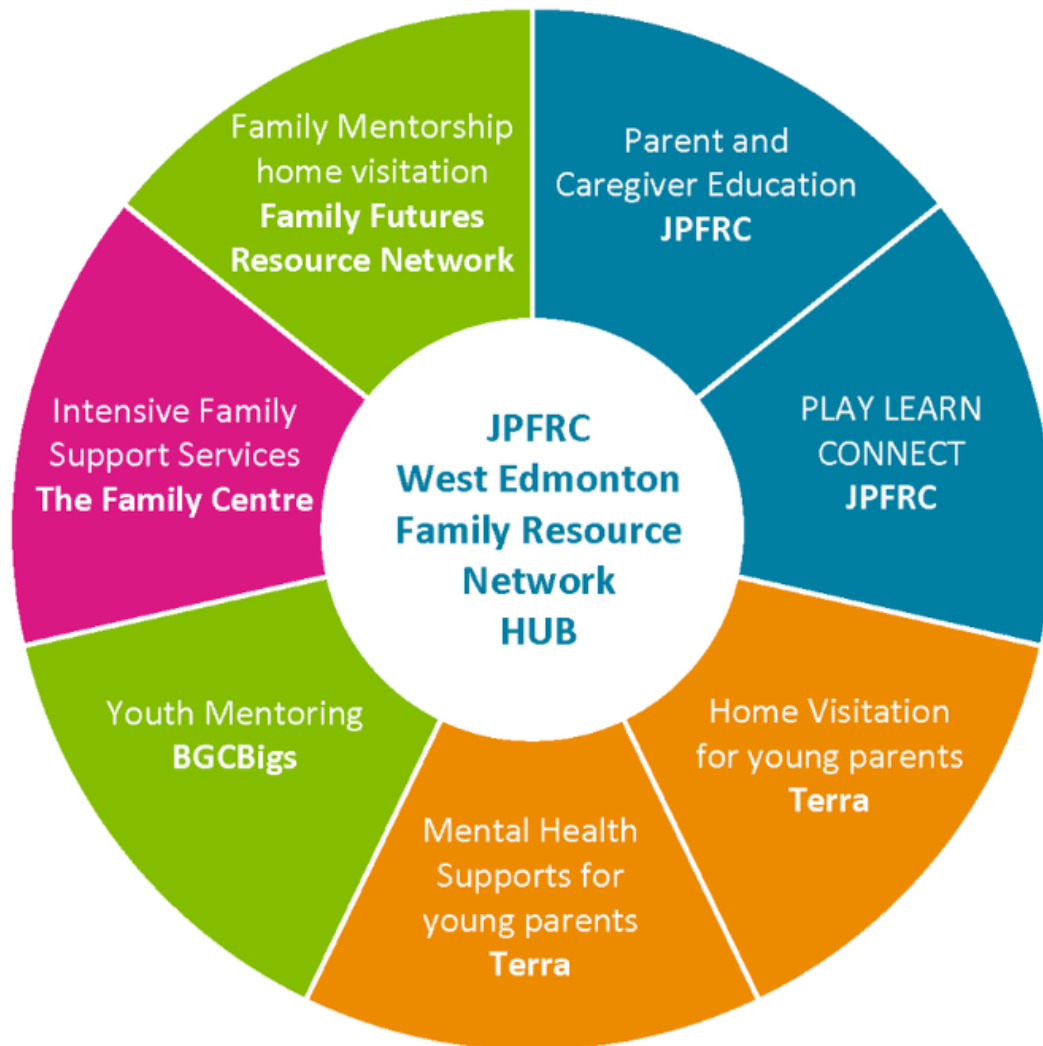
Family Resource Networks function as a Hub and Spoke Model with the Hub coordinating prevention and early intervention services and supports to families and children up to 18 years old in a geographic area. Specific services to families are offered in partnership with multiple agencies working together as spokes. There are 70 Family Resource Networks in the Province and 16 in Edmonton and area.

The Centre was thankful to be successful in its application for 3 years of continued City of Edmonton FCSS funding which has provided stability to our family support services during this uncertain time.

The Centre had the  
valuable support of  
**69** Volunteers

The Centre provided  
personalized, one on one  
and group supports to  
**29** young parent families

## Family Resource Network Hub and Spoke model for West Edmonton



### Plans for the coming year

#### **Navigating the COVID-19 Pandemic Safely**

With a dedication to keeping everyone safe, we will continue to adjust and refine and implement our health and safety procedures in alignment with Alberta Health Services and Children's Services guidelines.

#### **Professional Development**

Professional development focuses for Centre teams this coming year include: Making emergent curriculum visible, building responsive relationships, and building our virtual programming knowledge and skills

#### **Outdoor spaces**

We will work to raise funds to continue development of outdoor play spaces at the Orange Hub.

#### **Virtual Programs**

We will continue to grow and develop programs and services available to our participants virtually.



## Here is what parents and caregivers said about their experiences with Our Family Support Services

“My daughter definitely benefits from increased social skills from attending”

“I feel supported as a mother being part of a community”

“I started having more communication with my teen”

“My spouse and I have open discussions, by listening to each other”

“The courses I took made me more aware of my child's developmental needs”

“The atmosphere is so warm, welcoming and engaging”

“It's helped me to avoid post-partum depression.”

“Staff are so welcoming, helpful, and genuine. I feel I can always ask any question and they will be of support.”

### Funds raised in 2019

ADmazing Savings	\$416
Winter Celebration silent auction	\$1557
Bottle returns	\$342
<b>TOTAL</b>	<b>\$2315</b>

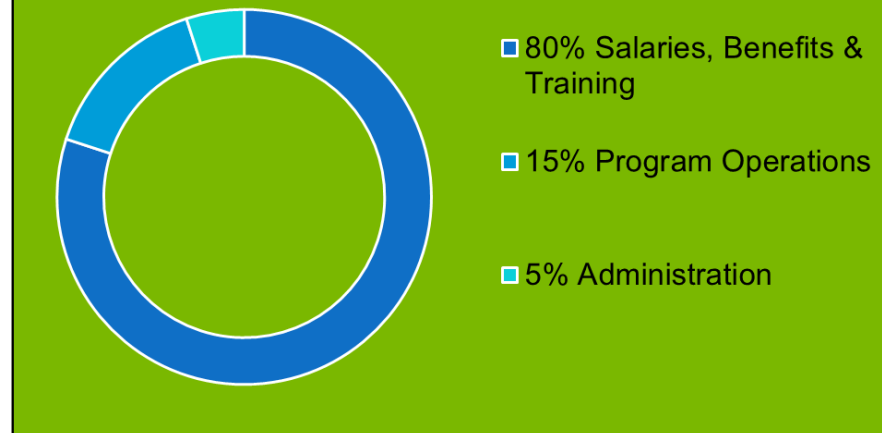
Thank you to **Bon Ton Bakery** and **The Italian Centre** West for their ongoing generous donations. These donations provide emergency food for community members in need.

**Fundraising** is a critical source of revenue for Jasper Place Family Resource Centre. Our AGLC Charitable Gaming License for Casino's is a key source of fundraising. The Centre has opportunity to participate in Casino's once every 2 years. We need the support of participant volunteers for this to be successful. Stay tuned for our 2021 Casino dates.

### Recognition of Long Term Staff

Ngan (Emy) Nguyen 5 years  
Jenny Wong 5 years  
Kanwal Khalil 6 years  
Andrea Hansen 6 years  
Rhonda Peppel 6 years  
Carman Ede 7 years  
Stephanie Basker 8 Years  
Jasmine Werrun 8 Years  
Katie Sharp 9 Years  
Lynn Shydrowski 9 Years  
Susan Watmough 10 Years  
Katie Bridger 10 Years  
Carlin Johnson 11 Years  
Gale O'Hara 12 Years  
Aida Gayayan 12 Years  
Paulina Reye 16 Years  
Wendy Countaway 16 years  
Pam Gudmundson 24 Years  
Sherie Balaban 25 Years  
Adine Shuchuk 28 Years

### 2019 Expenditures



### 2020/21

#### Board of Directors

Board Chair - Rebecca Thompson  
Vice Chair- Karissa Anderson  
Treasurer- Eva Brown  
Secretary - Nicole Tomie  
Director - Lloyd Hofmann  
Director- Beau Cotey  
Director Seanna Lawrence

### Thank you to our Funders

The City of Edmonton-Family & Community Support Services  
Government of Alberta Children's Services  
Edmonton and Area-Child & Family Services  
Alberta Education      Canada Summer Jobs



Thank you to the board, families, children, and community partners for your continued support.

**Adine Shuchuk**  
Executive Director