



# JASPER PLACE

## Family Resource Centre

### Annual Report - June 2021

Serving children, families and the community since 1972.

#### **Centre's Vision**

We are a leader in early learning and care.

We create stronger, healthier families and communities.

#### **Centre's Mission**

To partner with parents in promoting children's healthy growth and development by providing high quality early learning and care, and coordinated family programs and services.



#### **Core Values**

Relationship  
Community  
Inclusion  
Learning

#### **Dear Families, Board Members, Staff and Partners,**

As our 2019 Annual Report was shared later (November 2020) due to the COVID-19 Pandemic, this report will be brief.

#### **Living, working and playing during a Pandemic**

As we continue to navigate our days in the midst of the ongoing struggle with COVID-19 we find ourselves maybe a little more accustomed to living in the daily "unknown".

We are so thankful for our staff, families, children, participants and funders for their ongoing flexibility and understanding as we, together, figure our way as safely as possible while living the mission of Jasper Place Family Resource Centre.

We are thankful for the various Provincial and Federal grants that have supported the financial viability of our Early Learning and Child Care Programs.

We remain vigilant in continuing to keep everyone as safe and healthy as possible as we watch hopefully for the end.

#### **Our Early Learning and Child Care Programs**

##### **A dedication to quality**

The Centre continues to strive to offer the highest quality ELCC programs by focusing on the evidence based and current best practice in the field.

##### **Program Evaluation**

With the end of the Provincial Child Care Accreditation Program, the Centre is working to develop quality assurance program evaluation processes. Currently, this includes, annual surveys to parents and staff reflective evaluations and an ongoing professional development plan working towards defined outcomes.

## A dedication to quality continued

### Early Learning and Care Framework

Our ELCC Programs implement FLIGHT: Alberta’s Early Learning and Care Framework. This framework embraces children’s everyday experiences as sources of curriculum. FLIGHT serves as a guide for Educators in their work with children and in articulating children's learning and development . Our ELCC programs are recognized as lighthouse centre’s of demonstration of FLIGHT implementation.

Most recently, Our Cabrini program was invited to participate in the creation of a series of videos to build awareness of FLIGHT Provincially. These are available to view here [FLIGHT](#)



### A New Provincial ELCC Act and Regulations

In February 2021 the Province announced revisions to the Early Learning and Child Care Act. With this came updates to Early Learning and Child Care Regulations and requirements for all ELCC programs to submit new Program Plans June 1, 2021.

### New Program Plan—Our Updated Early Learning and Child Care Program Philosophy

The new program plan was an opportunity to review and reflect on the Centre’s ELCC philosophy to ensure alignment with current, evidence based best practice. Here are the updated five belief statements that form the foundation of our program philosophy.

#### 1. Learning through play

Children learn through play. Play is the child's natural way of exploring and responding to the world around them.

*"We value play. Children's active, collaborative, complex, communicative, vivacious playfulness within commonplace and imaginary events and experiences is a meaning making process."*

Makovichuk, L., Hewes, J., Lirette, P., & Thomas, N. (2014). Flight: Alberta’s early learning and care framework.

*"Play enhances every aspect of children’s development and learning. It is children’s window to the world. Play is so important that its significance in children’s lives is recognized by the United Nations as a specific right."* Hewes, J. (2006). *Let the children play: Nature’s answer to early learning*, Canadian Council on Learning



## 2. The first five years of life are important

Research confirms that the first five years are particularly important for the development of a child's brain, and the first three years are the most critical in shaping the child's brain architecture. Early experiences provide the foundation for the brain's organizational development and functioning throughout life. They have a direct impact on how children develop learning skills as well as social and emotional abilities.

*"Children's life-long health, well-being, learning, and behaviours are strongly connected to their early childhood experience."* Makovichuk, L., Hewes, J., Lirette, P., & Thomas, N. (2014). Flight: Alberta's early learning and care framework.

## 3. Relationships are central

A child's well-being is influenced by the quality of the relationships they experience. These relationships are supported by the responsive and reciprocal relationships we have with families, our community, with one another, with materials and with the environment.

It is through relationships with parents and other family members that we build our understanding of the child and the family's socio-cultural perspectives, values and beliefs which in turn ensures our program is supportive and reflective of individual children and family.

*"Children thrive when they are nurtured in close, consistent relationships, and their families benefit from these close caring relationships as well."*

*"Families know their children in ways that no one else can."*

Makovichuk, L., Hewes, J., Lirette, P., & Thomas, N. (2014). Flight: Alberta's early learning and care framework.



The artwork shared is masterfully created by the children participating in the Art Program in our Cabrini ELCC.

#### 4. Inclusion of all

Children and families of all abilities, attributes, experiences and world views have equal access to and participate meaningfully in our early learning and child care program.

*“When children are together as part of a diverse group, their development is enhanced and positive social attitudes are fostered.” Inclusion: Policy Development Guidelines for Early Learning and Child Care*

*Program.* -City of Toronto Children’s Services. [www.toronto.ca/children/prof\\_dev.htm](http://www.toronto.ca/children/prof_dev.htm)

*“Children experience reciprocity of relationships and interconnectedness of ideas in inclusive early childhood communities where educators value children’s contributions and seek out diverse perspectives of/for learning.”* Makovichuk, L., Hewes, J., Lirette, P., & Thomas, N. (2014). Flight: Alberta’s early learning and care framework.

#### 5. An educated workforce of life-long learners

A key component of our ELCC program is Early Childhood Educators that have sound knowledge of child development, who are life-long learners and continually explore evidence based, leading edge practice in early learning and care.

*“Educated and well-supported early childhood educators provide the foundation for high-quality early learning and care.”* Muttart Foundation. (2014). *Advancing the Educational Preparation and Professional Development of Alberta’s Early Learning and Care Workforce.* The Muttart Foundation

*“....your work as educators is more than love, caring, and joy—it is work that is multifaceted, complex, and dynamic.”* Makovichuk, L., Hewes, J., Lirette, P., & Thomas, N. (2014). Flight: Alberta’s early learning and care framework.

### Supporting Children and Families in our Community

We supported  
**1002** participants in 2020

**86%** of participants reported their **family functioning** improved as a result of participating with JPFRC

**76%** of participants reported they have an **increased network of social supports** as a result of participating with JPFRC

More than **300** participants accessed food and clothing from the Centre

**FCSS**  
Family & Community  
Support Services



Provincial Family  
Resource Networks

# A picture of the Family Resource Network Hub and Spoke model for West Edmonton

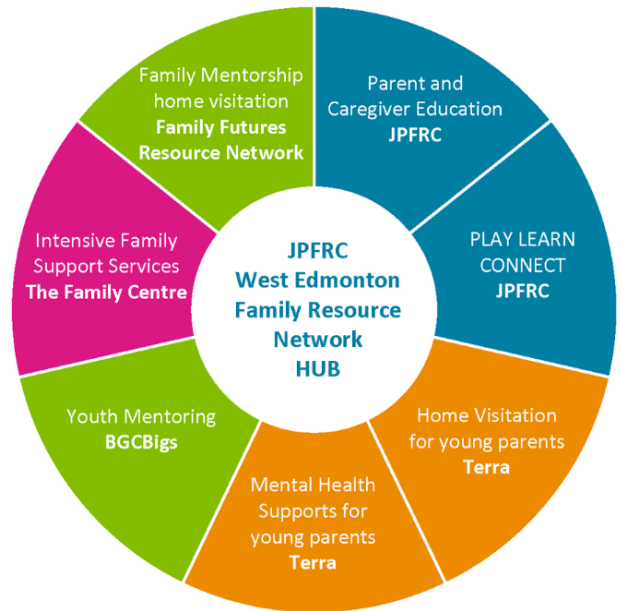


As the Network **HUB** for West Edmonton, the Centre:

- ⇒ Coordinates the delivery of services and supports for parents, caregivers and children 0 to 18 years
- ⇒ Connects families to services
- ⇒ Works closely with spoke service partners to ensure family needs are met
- ⇒ Connects service providers to one another and the community

The Centre also provides 2 **SPOKE** services.

Below is an introduction to our spokes.



### PLAY, LEARN, CONNECT

A variety of group opportunities for parents and caregivers to participate in play-based activities with their children. Promotes children’s social and emotional development and creates a social connection environment for all.

### Parent and Caregiver Education

A suite of evidence based positive parenting programs for all ages and stages, 0-18 years, in both one on one and group formats. Programs can be customized to fit individual family’s needs.

### Family Learning Program - Home Visitation For Young Parents

In-home and community support to meet diverse needs of vulnerable teen parents and their children. The program utilizes a strength-based process in engaging with parents and their children to build positive and goal-oriented relationships.

### Mental Health Support Program for Young Parents

Individualized mental health supports to meet the diverse needs of vulnerable teen parents.



### Family Mentorship Program -Home Visitation

For families with children 0-6 years old ,utilizing the Parents As Teachers evidence based curriculum. Focus is on the role of the caregiver and how to positively contribute to their child’s growth and development. Family Mentors assist in locating community resources while providing information on child development.

### Intensive Family Support Services

An inclusive and integrated community in-home support service geared towards building healthy attachments, healthy relationships, and healthy families in an effort to improve overall family functioning to help prevent family breakdown and child mistreatment.



Boys & Girls Clubs



Big Brothers Big Sisters

### Youth Mentorship Program

Through participation in education, recreation and social activities with a volunteer mentor, a mentoring relationship provides a child or youth with a friendship, guidance and a positive role model.

Boys & Girls Clubs Big Brothers Big Sisters of Edmonton & Area

## Here is what parents and caregivers said about their experiences with our Family Support Services

“Because of this Family Resource Centre, I have support in regards to my son's speech and language development.”

“They have been a amazing support system for me and my children in extremely difficult times.”

“JPFRC continues to give us a safe place to learn, grow and explore our roles in our family, and in the world.”

“I feel less isolated because I was connected with other families.”

“I feel supported in my parenting journey.”

“I feel motivated to try new activities at home to support my child.”

“This place has served as an invaluable source to encourage socialization and confidence in both my daughter and me as a new mom.”

“Extremely resourceful in helping me access resources and supports I didn't know existed in the community.”

## Plans for the coming year

### **Navigating the COVID-19 Pandemic Safely**

We are continuing to ensure health and safety practices in all of our programs and services align with evolving Provincial orders and restrictions.

### **Outdoor spaces**

We are refreshing the outdoor space at Cabrini and beginning phase 1 of development in our Orange Hub spaces.

### **Website and Social Media**

We are creating interactive content to share our programs on social media and our website.

### **Virtual Programs**

We are developing our virtual programs and services as an additional option for participants to engage with us.

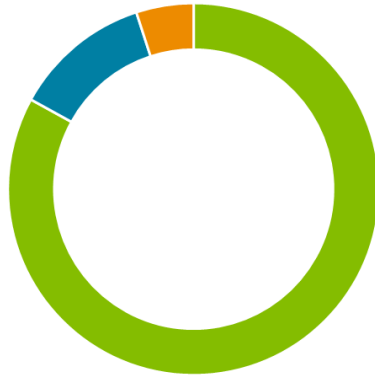
### **Professional Development**

We are focusing some Professional Development on responding to the Truth and Reconciliation Calls to Action.

### **Inclusive Programming**

We are co-developing policy and procedure with staff and participants as we define and grow our inclusive supports.

## 2020 Expenditures



- Salaries and Benefits
- Program Operations
- Administration

**Fundraising** Is a critical source of revenue for Jasper Place Family Resource Centre.

Our AGLC Charitable Gaming License for Casino's is a key source of fundraising. The Centre has opportunity to participate in Casino's once every 2 years.

We need the support of participant volunteers for this to be successful. Stay tuned for our 2021 Casino dates.

## 2021

### Board of Directors

Board Chair - Beau Cotey  
Vice Chair- Karissa Anderson  
Treasurer- Eva Brown  
Secretary - Open  
Director - Brian Yaeck  
Director - Brianne Gagnon  
Director- Kaoutar Mechkouri  
Director - James Simone



Thank you to **Bon Ton Bakery** and **The Italian Centre West** for their ongoing generous donations. These donations provide emergency food for community members in need.

## Thank you to our Funders

The City of Edmonton-Family & Community Support Services  
Government of Alberta Children's Services  
Edmonton and Area-Child & Family Services  
Alberta Education      Canada Summer Jobs



Thank you to the board, families, children, and community partners for your continued support.

**Adine Shuchuk**  
Executive Director

