

# ANNUAL REPORT 2021-2022

---



**JASPER PLACE**  
Family Resource Centre

# CELEBRATING 50 YEARS

---

**Dear Families, Board Members, Staff and Community Partners,**

I begin my preparation to write our annual reports by gathering and reflecting on the Centre's accomplishments and challenges over the past year. This year, I find myself reflecting back much further as the Centre celebrates it's 50th year of serving children and families. As I wasn't connected to this place for the first 20 years, I reached out to our past and beloved Executive Director, *Anna Beres*, who served the Centre and the community for 40 years. Anna was the cornerstone in creating the culture that JPFRC keeps alive today and was happy to share some history.

RELATIONSHIP

INCLUSION

CORE VALUES

COMMUNITY

LEARNING

Serving children, families and the community since 1972.

## Centre's Vision

We are a leader in early learning and care. We create stronger, healthier families and communities.

## Centre's Mission

To partner with parents in promoting children's healthy growth and development by providing high quality early learning and care, and coordinated family programs and services.



# A brief history of Jasper Place Family Resource Centre

---

**1972-** We opened a 2 room daycare. The Centre was municipally funded to also provide family support services. It was located in the Ukrainian Catholic Eparchy of Edmonton Church.

**1983-** We began offering Kindergarten and ECS Services as an Accredited Alberta Education Independent Operator.

**1990-** We moved into one wing of Jasper Place High School and expanded to 3 playrooms.

**1994-** We opened a 4th play room and began offering care for children 12-18 months.

**1995-** We expanded our Family Services to support pregnant and parenting teens with TALKS Program.

**2000-** We moved from JP High School to the Pineview building on the grounds of the Misericordia Hospital.

**2006-** We expanded our Family Support Services again as we became the designated Parent Link Centre for West Edmonton.

**2008-** We moved from the Pineview building to the Cabrini Centre.



# ...Continued

---

**2012-** We began working alongside MacEwan University as a lighthouse Centre in developing and piloting what is now FLIGHT: Alberta's Early Learning and Care Framework.

**2017-** We expanded our City of Edmonton Family and Community Support Services Programs to outreach to additional neighbourhoods in West Edmonton.

**2018-** We became a site for the 3 year pilot of the ELCC program and \$25 a day daycare. We opened a 5th playroom.

**2019-** We opened our second location at the City of Edmonton's Orange Hub.

**2020-** Our family support services adjusted and grew as we became the Family Resource Network Hub for West Edmonton.

**2020-** We began navigating the COVID-19 Pandemic.

**2021-** The pilot ELCC \$25 a day program ended.

**2022-** We began to offer the Provinces Affordability Program for Child Care.



# LOOKING FORWARD TO THE NEXT 50 YEARS

We have many plans for our next 50 years, the most important being to continue to provide leading edge, relationship based services to children and families. At our recent staff in-service day, staff were asked to share hope and dreams for the next 50 years.

## Here are a few of the ideas.

- Enhance our inclusion practices
- Increase networking and collaboration between our 2 locations
- Grow our own produce
- Create opportunities for parents and staff to share their unique gifts and expertise
- Continue to grow as a Centre that is socially responsible and focused on environmental sustainability





**HIGHLIGHTS  
FROM  
THE PAST YEAR**

# OUR BOARD OF DIRECTORS

As a not for profit organization, we are governed by a volunteer Board of Directors. The Boards job is to ensure the Centre's vision and mission are brought to life through the lens of the Centre's core values. This past year the Board completed a lot of foundational work. We reviewed and revised our Bylaws. We began the processes of updating our governance policy and we created an updated strategic plan. Here are our current priorities.

## Strategic Plan priorities

Develop Human Resource Policy to support recruitment and retention of highly skilled staff

Seek out alternative sources of revenue to support ongoing operations

Develop Financial Policy that supports the long term viability of the Centre

## 2021/22

### Board of Directors

Board Chair - Beau Cotey  
Vice Chair- Karissa Anderson  
Treasurer- Eva Brown  
Secretary - Brianne Vereschagin  
Director - Brian Yaeck  
Director- James Simone  
Director -Bailey Hopkins

## 2022/23

### Board of Directors

Board Chair—Brian Yaeck  
Vice Chair- *Open*  
Treasurer- Beau Cotey  
Secretary - Brianne Vereschagin  
Director - James Simone  
Director- Bailey Hopkins  
Director - Heather Mangan  
Director -Nelgee Laminta

# OUR EARLY LEARNING AND CHILD CARE (ELCC) PROGRAMS

---

It has been a complex year for our Early Learning Programs. Our enrollment in both programs was low due to the ongoing Pandemic and we struggled to remain financially viable. We were able to access the Federal wage and rent subsidy programs which enabled us to limit staff lay-offs. We worked to navigate the ever changing Provincial restrictions and guidance in an effort to keep everyone as safe and healthy as possible. This involved continuous connection to Alberta Health and Children's Services, consistent updating of protocols and transparent and timely communications to families and staff. We strived to keep positive morale of Educators as their workload increased with additional cleaning and staff shortages.

## **A dedication to quality**

Despite these challenges, we are proud that our dedication to children and families and to high quality Early Learning and Child Care remained in the forefront. We continue to accomplish this by supporting one another day to day and by focusing on our mission: To partner with parents in promoting children's healthy growth and development.

**Retaining well qualified Early Childhood Educators** - A skilled workforce is the cornerstone of quality ELCC. Our dedicated team averages 4 years with us with a number of Educators celebrating 10 years. We have weathered the Pandemic together.

**Commitment to ongoing Professional Development** - We maintained as many of our PD practices as possible in the last year. A number of Educators completed the FLIGHT curriculum course. We worked alongside our pedagogical partner in implementing emergent curriculum and our ASaP coach in supporting children's social and emotional development. Educators completed and shared long-term projects as part of their annual reflective evaluations.



**Focus on relationships with families** - Although we needed to adjust a number of our relationship building activities, we found new and creative ways to stay connected with parents as much as possible.

**Focus on relationships with children** - Our most important focus throughout the Pandemic has been in maintaining individual, responsive relationships with the children. We have accomplished this by striving to keep staffing and daily routines as consistent and familiar as possible amongst the many unavoidable changes.

**Kindergarten and ECS Programs** - These programs went through a stringent motoring process with Alberta Education in November. We had opportunity to share some of our leading and innovative practices for early learning. These programs were certified to be in compliance with all Provincial policy and practice.



# LOOKING FORWARD

---

With Pandemic restrictions lifting, parents returning to work and with the Provinces new affordability program making child care more accessible, our enrollment is slowly increasing and our programs are beginning to stabilize. We are able to return to community Professional Development activities that had been on hold for some time. We are looking forward to creating community of practice opportunities with other early learning and care programs.

## Family centered practice

Here are a few highlights families recently shared about the difference our ELCC programs make in their lives.

“We are thrilled with the professionalism of the educators and how welcomed our family has been. We have seen positive developments for both of our children.”

“When we are having any challenges at home I feel comfortable discussing them with the staff and supported, often with new ideas on directions to take in particular situations.”

“The quality of education is one of the standout elements for our family.”

“We love to see that the Centre is continually evolving and holds professional development for its staff as a high priority.”

“I feel like a better parent because I can work full time in a job I love doing while knowing my child is loved, cared for and being exposed to many developmentally appropriate activities.”

“Jasper Place has been what has created normalcy for our child in the past 2 and bit years of the pandemic. Without this place, our child would not be thriving in the same way.”

“ I have appreciated the different ways educators work with my child to help when he is having some challenges. They are very open and easy to talk to.”

“The focus on the social emotional development has been so helpful for everyone in our house.”

# OUR FAMILY SUPPORT SERVICES

---

The Centre served  
1067 participants  
via 216 virtual and in-person  
programs

More than 500 people  
accessed emergency food and  
clothing from the Centre

## Our Family Support Services have 3 focus areas

### Supporting families to navigate and connect to services -Coordinating services to families via partnerships

The pandemic has brought hardships for many families .This past year we connected families in need to emergency food sources through our partnerships with Bon Ton Bakery, The Italian Centre West and the Food Bank. We provided mental health supports with onsite drop-in counselling through our partnership with The Family Centre. We are planning to coordinate family events in the coming year to connect families to our services and to one another.

### Child Development and Well-being

We continued to offer our Play Learn Connect Programs virtually throughout the Pandemic. We are happy to see a gradual return to in-person programs as these opportunities for children to play with one another is important in supporting their social and emotional development. We completed much needed improvements to our LaPerle location.

### Caregiver Capacity Building

We also continued our full range of parent education programs virtually. We discovered new possibilities as we built capacity in virtual parent education. Parents are able to attend from home once their children are sleeping. Parents are able to attend together even if one parent is working out of town. As we return to in-person services, a number of our virtual offerings will remain as a newly discovered option. Additional staff completed training in levels of Triple P Positive Parenting and Circle of Security. We look forward to a return to some of our in-person group partnerships with the Health Centres and other community agencies.

# OUR FAMILY SUPPORT SERVICES

---

Our Family Support Services have 2 funding sources The City of Edmonton Family Community Support Services (FCSS) , the Province of Alberta's Family Resource Networks (FRN)

## FCSS highlights

---

**FCSS**

Family & Community  
Support Services



City of Edmonton FCSS has revised their program priorities to better align with the city's strategic plan. These priorities are; healthy social emotional development, positive mental health, healthy relationships and poverty reduction and homelessness. Organizations were invited to submit new funding applications.

## FRN highlights

---



Provincial Family Resource Network's are in their third year of operation. The 70 networks across the province have been working collaboratively to create our standards of practice. Our Team is participating as a community of practice to align these standards with our current practices.

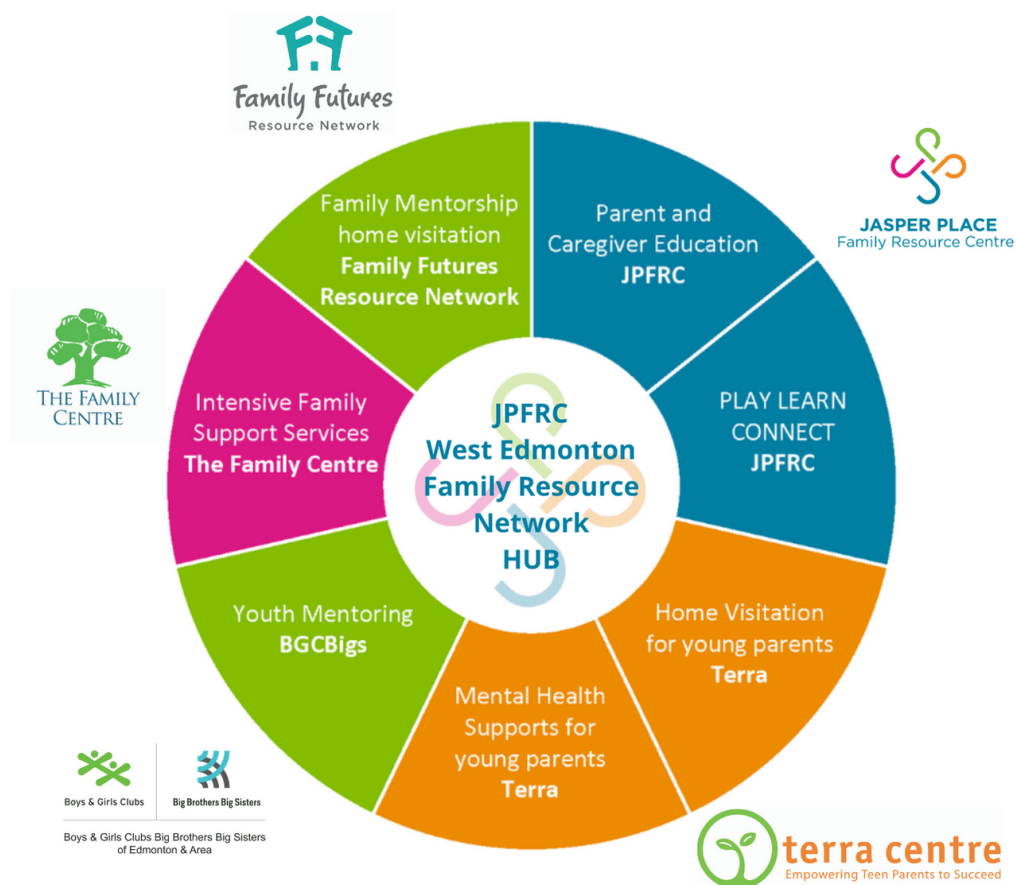
**85% of participants  
say they have new  
parenting strategies**

**80% of participants  
say they know more about  
how to access  
community resources**

# THE WEST EDMONTON FAMILY RESOURCE NETWORK

Family Resource Networks (FRN) function in a **hub** and **spoke** model with the hub providing connection and coordination and the spokes providing direct service to families.

Here is a model of the West Edmonton Family Resource Network



# THE WEST EDMONTON FAMILY RESOURCE NETWORK

Here is what parents and caregivers shared about their experiences with Our Family Support Services

"The programs help socialise my children, help them to improve problem solving skills, learn to build things by imagination and creativity."

"The program is helping me gain more confidence in my understanding of my child's behavior"

"I learned how to build up my child's self-esteem. I learned different ways to praise him and his actions"

"This is a great program to allow dads to connect with other dads, and also learn about parenting"

"I was really insecure about parenting and living in a foreign country, but now I'm doing so much better..."

"I feel less isolated because I was connected with other families. I feel supported in my parenting journey"

"It's helped me to avoid post-partum depression."

"Staff are so welcoming, helpful, and genuine. I feel I can always ask any question and they will be of support."

"I feel the information provided has helped provide a more positive dynamic in our household."



# OTHER HIGHLIGHTS



## **Staff in-service & celebration of 50 years**

On May 20 all staff gathered together for the first time in over 2 years. The day focused on celebrating our 50 year history, acknowledging the struggles of the past 2 years and dreaming forward for the future together.

## **Special visitors**

The Minister of Children’s Services-Rebecca Schultz visited our Orange Hub Program. We were proud to share how our Family Resource Network and Early Learning Programs work alongside one another to support families. Kelly McCauley—Member of Parliament for Edmonton west will visit our Cabrini location in June.



## **Casino**

We had a successful Casino fundraising raising event. We are awaiting information on the total funds raised.



## **Website & social media platforms**

Our virtual presence continues to grow as we enhance our website and social media platforms.

## **Leadership development**

Our leadership team participated together in valuable “growing collaborative learning teams” training with Organizations by Design.

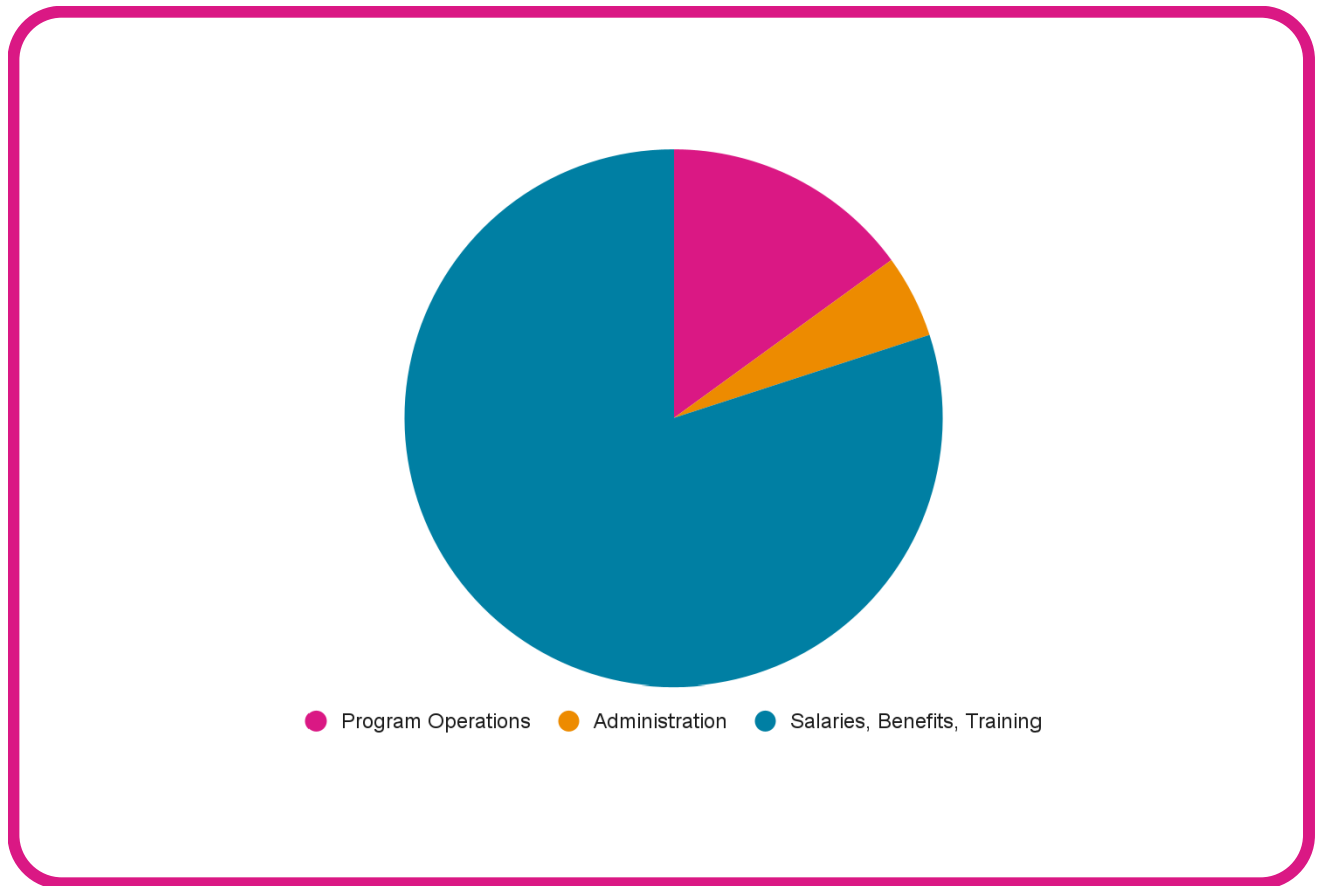
## **Advocating for quality care**

The Centre participated on a number of quality child care advisory groups developing a policy roadmap in relation to the bilateral Canada-Alberta Early Learning and Child Care Agreement.



# 2021 EXPENDITURES

---



**Fundraising** is a critical source of revenue for Jasper Place Family Resource Centre. Our AGLC Charitable Gaming License for Casino's is a key source of fundraising. The Centre has opportunity to participate in Casino's once every 2 years.

# THANK YOU!

**BON TON**  
BAKERY

Thank you to **Bon Ton Bakery** and **The Italian Centre** West for their ongoing generous donations. These donations provide emergency food for community members in need.



**Thank you to our Funders**

**FCSS**  
Family & Community  
Support Services



*Alberta*

Canada 

**THANK YOU TO THE BOARD, FAMILIES, CHILDREN, AND  
COMMUNITY PARTNERS FOR YOUR CONTINUED  
SUPPORT.**

**ADINE SHUCHUK  
EXECUTIVE DIRECTOR**