



**JASPER PLACE**  
Family Resource Centre

# BECAUSE CHILDREN ARE CITIZENS

SERVING CHILDREN, FAMILIES AND THE COMMUNITY SINCE 1972



---

**2023-24**

ANNUAL REPORT

---

## A LETTER FROM OUR EXECUTIVE DIRECTOR

Dear Families, Board Members, Staff, and Community Partners,

As I prepare to write this Annual Report, I am reflecting on the wonderful work of our valuable team, volunteers, and community partners in bringing the Centre's core values of relationship, community, inclusion, and learning to life.

Our intentional focus on values in daily practice is truly making a difference in the lives of children and families.

One important area of work in the past year has been on building parallel practices that ensure our team members are experiencing a similar value-based culture at work as the participants they serve.

This work is grounded in the belief that the well-being of our team members, in turn, supports the well-being of our program participants.

Here are the goals that our team is collectively building policy, practices, and processes to achieve:

### Community

Team members are connected, motivated, and empowered

### Relationship

Communication and collaboration amongst team members are open and inclusive

### Inclusion

Health and safety practices are clear, consistent, and equitable

### Learning

Continuous opportunities for professional development

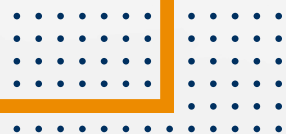
## OUR VISION

We are a leader in early learning and care.

We create stronger, healthier families and communities.

## OUR MISSION

To partner with parents in promoting children's healthy growth and development by providing high quality early learning and care and coordinated family programs and services.



# OUR FAMILY RESOURCE SERVICES

Our Family Support Services have **three** focus areas made possible by **two** funding sources: **The Province of Alberta's Family Resource Networks (FRN)** and **The City of Edmonton Family Community Support Services (FCSS)**.

## Connecting Parents and Caregivers

Our family resource program facilitators use their vast knowledge of resources and relationships with community partners to reach out and connect parents and caregivers to the services and supports they are seeking.

## Child Development and Well-Being

Our Play Learn Connect programs offer drop-in group play opportunities at locations across West Edmonton. As parents, caregivers, and young children gather together, we offer opportunities for social and emotional development for children and for social connection among families.

## Caregiver Capacity Building

Our Parent and Caregiver Education programs offer opportunities for people raising children to gain knowledge and skills in child development and positive parenting. Parents and caregivers participate in-person and virtually, one-on-one, and in groups.

**1314** children and caregivers participated in our **152** Early Learning and Parent Education Programs

**605** parents and caregivers were connected to resources and supports via FRN Hub Services

**FCSS**  
Family & Community  
Support Services



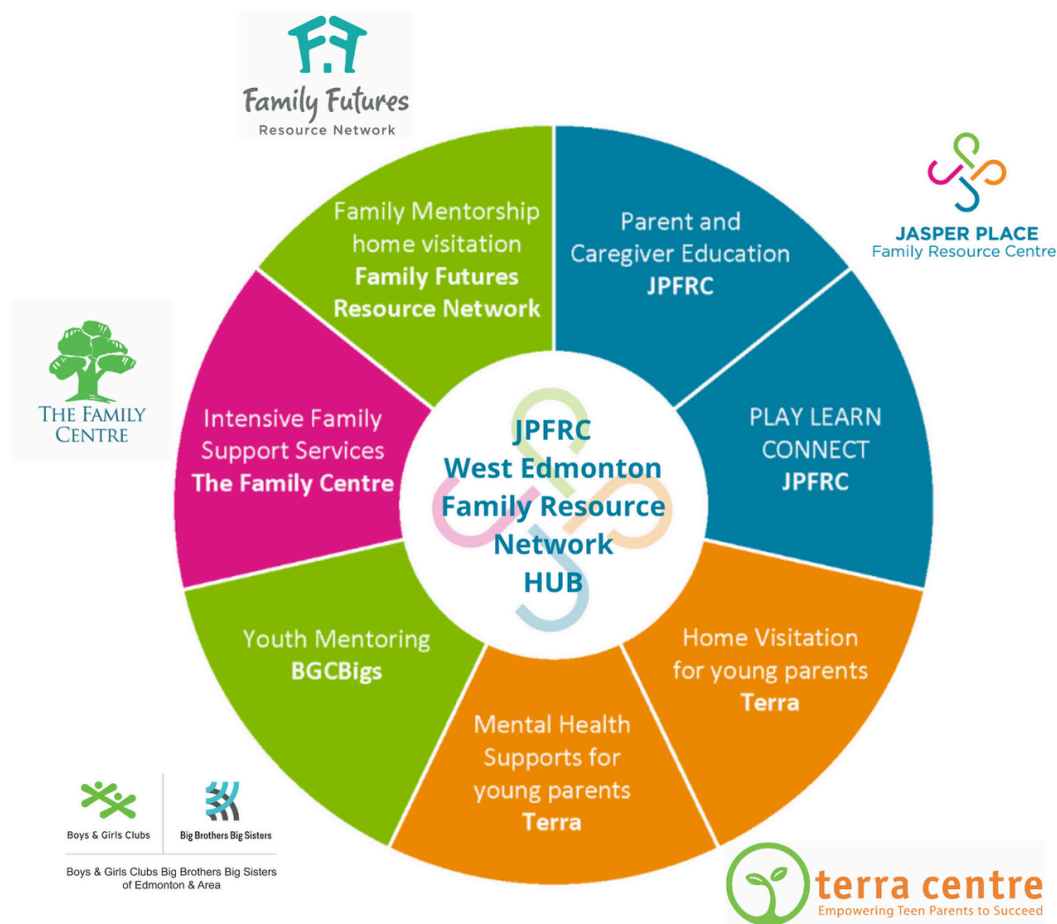
*Alberta*   
Provincial Family  
Resource Networks

# THE WEST EDMONTON FAMILY RESOURCE NETWORK

*Jasper Place Family Resource Centre* is proud to be a Family Resource Network Hub for West Edmonton.

As the Hub, the Centre is responsible to coordinate early intervention and prevention services to families by leading, supporting and developing collaborative practices with community partners.

**We are better able to serve children and families through collaborative partnership.**



A few new partners we began working alongside this past year are:

**West Jasper Sherwood Community League**

To offer Play, Learn, Connect Programs out of their hall

**Misericordia Neonatal Intensive Care Unit**

To host a celebration all of the infants cared for in the NICU over the year

**AHS Early Intervention**

To offer play programs for families

**Norquest College**

To facilitate the Brain Architecture Game with students

Family Support Services are easily accessed in West Edmonton thanks to **21** community partnerships

## Here's what parents and caregivers share about their experiences with our Family Support Services

*"I can better understand my child's emotions from his perspective. Learnt coping mechanisms and how to support him through tough moments."*

"This session helped me see more about the way my partner and I parent and ways we can shift our styles to be more supportive of each other and the emotional development of our children..."

"I really love the resources that are available, they give myself and my daughter a chance to get out of the house and interact with other moms and kids"

"It has made a difference in my life and my child's, she has a chance to make friends and interact with kids her age...I have met other moms as well"

"...a great resource for our family to access and build a sense of community"

## As a result of participating in our program...

More than **584** people accessed basic needs supports

**36** Under Resourced Women were supported in having a healthier pregnancy

**82%** of participants say they have improved networks of social support

**91%** of participants say they experience improved family functioning

### **Our Family Resource Team - Learning together in a community of practice**

**Jasper Place Family Resource Centre** knows that learning is most generative and impactful when it is experienced in a practice of relationship. Over the past year, the family resource team has come together as a community to research, share knowledge and build understanding of **important topics such as;** land acknowledgment as an act of reconciliation, how we are all treaty people, intersectionality, and privilege.

# OUR EARLY LEARNING AND CHILD CARE (ELCC) PROGRAMS

## Towards \$10 a Day Child Care by 2026

Alberta continues to participate in the development of a nationwide system of Early Learning and Child Care via the Federal-Provincial agreement. As the province works to reduce fees for families to an average of \$10 a day, the Centre continues to experience ongoing revisions to funding models. We are so thankful to see monthly fees continuing to reduce for families, and we are hopeful for the stabilization of operational funding as we move from a primarily fee-for-service-based model to a publicly funded model.

[Canada-Alberta Early Learning and Child Care Agreement – 2021 to 2025 - Canada.ca](#)

## Advocating for Accessible, Inclusive, Affordable, High-Quality Early Learning and Child Care (ELCC)

Beyond more affordable ELCC, Jasper Place Family Resource Centre continues to advocate for a high-quality, accessible, and inclusive early learning and child care system for all children. Much of our advocacy work is through participation and membership in groups such as: The Edmonton Council for Early Learning and Care (ECELC), The Childcare Association for Resources to Administrators (CAFRA), Child Care Now, and Alberta Early Childhood Educators Association (AECEA).

As part of our work to advocate for quality in ELCC, the Centre continues to participate in the research and implementation of FLIGHT: Alberta's Early Learning and Care Framework.

[Flight | Alberta's Early Learning and Care Framework \(flightframework.ca\)](#)

As the Centre entered its 12th year of partnership with this project, we were proud to participate in the creation of a series of videos intended to encourage programs across the province to implement FLIGHT.

[Flight | Video Resources \(flightframework.ca\)](#)



Jasper Place Family Resource Centre holds an image of children as citizens with rights to care and early learning programs based in current, evidence-based philosophy about early brain development and early learning pedagogy.

## CONTINUOUS DEVELOPMENT FOR OUR EARLY CHILDHOOD EDUCATORS

Each year, our ELCC programs choose a professional development focus for the year. The focus of the past year has been on Pedagogical Documentation. One of our first pieces of learning together was to create a shared definition.

### *Our Definition of Pedagogical Documentation*

The purposeful and intentional act of documenting observations of children's actions and adding educator, children, and family member thoughts and reflections about the meaning behind what children are trying to accomplish. Pedagogical documentation also includes next step plans to scaffold learning.

A second piece of learning together was in collaboratively naming why Pedagogical Documentation is critical to our work. Here are just a few of our whys:

### *Why for Educator Practice?*

- Makes educator thinking and planning of emergent curriculum visible
- A practice through which we learn more deeply and reflect more complexly on our daily practice and curriculum decisions
- Elevates the profession by documenting the pedagogy of early learning



"The staff feel like family, as do other children and their parents. . Such a welcoming space that has fostered our kids and made our own family unit function well!"



## Continuous Development for Our Early Childhood Educators (cont.)

### *Why for Children?*

- Acknowledges and advocates for children's active participation and citizenship in their own learning
- Supports the building of a child's strong sense of self and identity by seeing their learning processes (thoughts, ideas) and dispositions to learn documented

### *Why for Families?*

- Provides written documentation of their child's learning through the play journey
- Highlights the intentional reflection, planning, and knowledge of Early Learning philosophy employed by educators in supporting children's learning
- Provides an avenue for families to collaborate with educators in their child's learning journey

*Aligned with our mission 'to be parent's partners,' JPFRC seeks to hear and respond to parent's experiences with us.*



## Here is what parents share about their experiences with our ELCC Programs

"They support our child and family as a whole. We feel valued and cared for."

"We love that the staff are constantly learning and developing and that they are in good communication with each other."

"Our children are loved and well taken care of and I feel completely comfortable bringing them to the centre every day"

"It's such an important feeling as a parent knowing that your child is taken care of during the day when you can't be with them."

"The staff feel like family as do the other children and their parents. Such a welcoming space that has fostered our kids and made our own family unit function well! "

"It gives us peace of mind that our child is getting quality social, emotional, physical and intellectual activities/interactions when we may not be able to provide it all at home day to day."

"...They have truly had a positive impact on our children and our family."

"The environment feels warm and inviting and we know our child is in very good hands."

# OUR BOARD OF DIRECTORS

The work of our Board of Directors ensures the Centre's vision and mission are brought to life through the lens of the Centre's core values.

**A very big thank you to our Board of Directors for sharing their time and expertise.**

Board Of Directors			
2023-2024			
<b>Board Chair</b>	Brian Yaeck	<b>Director</b>	Heather Mangan
<b>Vice Chair</b>	Laina Kelly	<b>Director</b>	Nelgee Laminta
<b>Treasurer</b>	Beau Cotey	<b>Director</b>	Suzy Connolly
<b>Secretary</b>	Brianne Vereschagin	<b>Director</b>	Britnee Contessa
<b>Director</b>	James Simone	<b>Director</b>	Nicole Hatton
<b>Director</b>	Bailey Curtis	<b>Director</b>	Andy Mikula

This past year, the Board continued work in achieving goals under our strategic planning priorities. Some highlights include:

## **Support Recruitment and Retention of Highly Skilled Staff**

- The Centre contracted an outside facilitator to complete an organizational review. Results from this review highlighted efficiencies to be built into our organizational structure. These efficiencies support better working conditions.
- An RRSP program with monthly Centre contributions is resourced and ready to launch by **Fall 2024**.

## Expanded operations to strengthen the Organization

- The Centre entered into a new service agreement to provide family support services to a local elementary school.

## Develop Financial Policy that supports the Long-term viability of the Centre

The Board developed a financial plan to secure resources in the following key areas: staff recruitment and retention, capital projects, and risk mitigation.

## Saying Farewell

A heartfelt farewell to the following Board Members. **Jasper Place Family Resource Centre** thanks you for your service in making a difference in the lives of children and families.

Brian Yaeck - 3 years of service

James Simone - 3 years of service

Britnee Contessa - 1 year of service

## Board Work Plans for the Coming Year

In the coming year, our Board of Directors will work together to review and refresh our Vision and Mission statements and build an updated and action-based 3-year strategic plan.

## ***INTERESTED TO SERVE?***

We are always looking for new board members with diverse areas of lived experience and expertise.

[Join our Board of Directors – Jasper Place Family Resource Centre](https://jasperplace-cfrc.com)  
[.\(jasperplace-cfrc.com\)](https://jasperplace-cfrc.com)

# A Culture of Life-Long Learning

Aligned with our core value of learning, **Jasper Place Family Resource Centre** supports team members in continuous professional development. This practice both ensures we are providing leading edge programs and services and supports a motivating work environment for all.

## **Some highlights of our new learnings this past year include:**

- Leading Through a Pedagogical Lens
- Triple P positive parenting program- Baby, teen & fearless
- Get Outside and Play Conference
- Family Violence Protocols
- Mental Health First Aid
- Supporting Children's Regulation
- Building Culturally and Radically Responsive Organizations
- Kimochi's – children's social and emotional development
- Outdoors Loose Parts
- Kids Have Stress Too!
- Systems Leadership
- Health for Two – Canadian prenatal nutrition program
- ASSIST Training – for suicide prevention
- Psychological health and safety in the workplace
- Human centred approach to understanding mental health
- Pedagogical Pathways

We are also supporting a number of our team members to continue their post-secondary education with flexible scheduling and practicum supports

## **Other highlights within our culture of life-long learning include:**

- Building intentional processes to support practicum students
- Sharing Educator professional development reflections and celebrations of successes with colleagues and families
- Continuing to grow our community of practice team meetings with shared facilitation roles



## LOOKING AHEAD

Here are a few plans we are looking forward to this coming year.

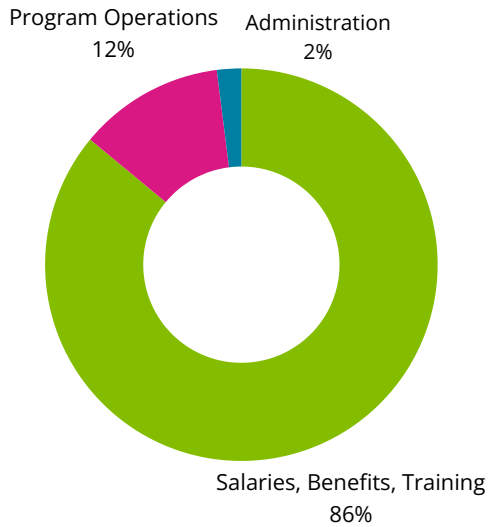
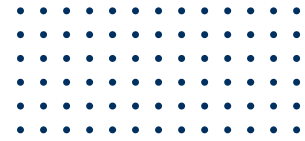
- Further developing our programs through a lens of diversity, inclusion and equity
- Highlighting and articulating the importance of Care in our early learning curriculum
- Creating a community of practice for team members interested to research best practice with a view on presenting learnings at future professional conferences
- Rolling out our RRSP Program for team members
- Finally completing our roof top play space at the Orange Hub!



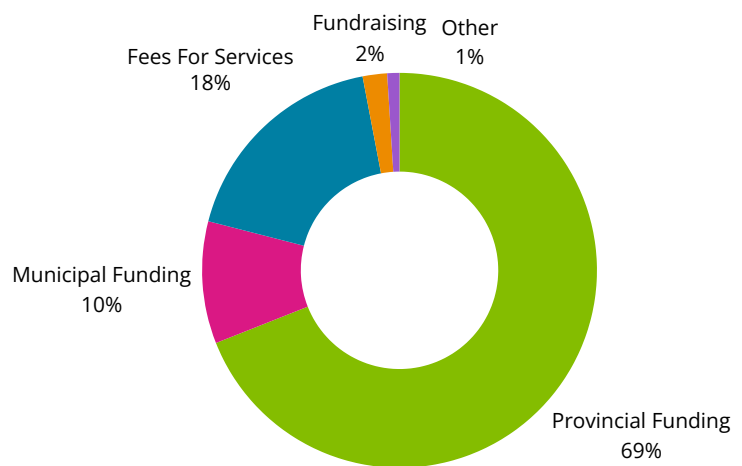
***Jasper Place Family Resource Centre*** holds an image of children as citizens with rights to care and early learning programs based on current, evidence-based philosophy about early brain development and early learning pedagogy.



# 2023 EXPENDITURES



# 2023 REVENUE



## FUNDRAISING

Fundraising is an important source of revenue for *Jasper Place Family Resource Centre*. Funds are used to purchase materials and equipment that support our quality programming.

Our AGLC Charitable Gaming License for Casinos is a key source of fundraising. The Centre has opportunity to participate in Casinos once every 2 years.

We will participate in our next Casino early in 2026 and count on volunteers to support our success.

**Our 2024 Casino Proceeds were \$77,875.48!**  
Thank you to all the volunteers who helped out

# Thank You to Our Funders!

**FCSS**  
Family & Community  
Support Services



- The City of Edmonton-Family & Community Support Services
- Government of Alberta Children's Services
- Alberta Education

**Thank you to the board, families, children, and  
community partners for your continued support.**

**ADINE SHUCHUK**  
EXECUTIVE DIRECTOR

A handwritten signature in black ink that reads "Adine Shuchuk".



**JASPER PLACE**  
Family Resource Centre

---

**Cabrini Centre** - 780.489.2243

**The Orange Hub** - 587.635.1775

[jasperplace-cfrc.com](http://jasperplace-cfrc.com)